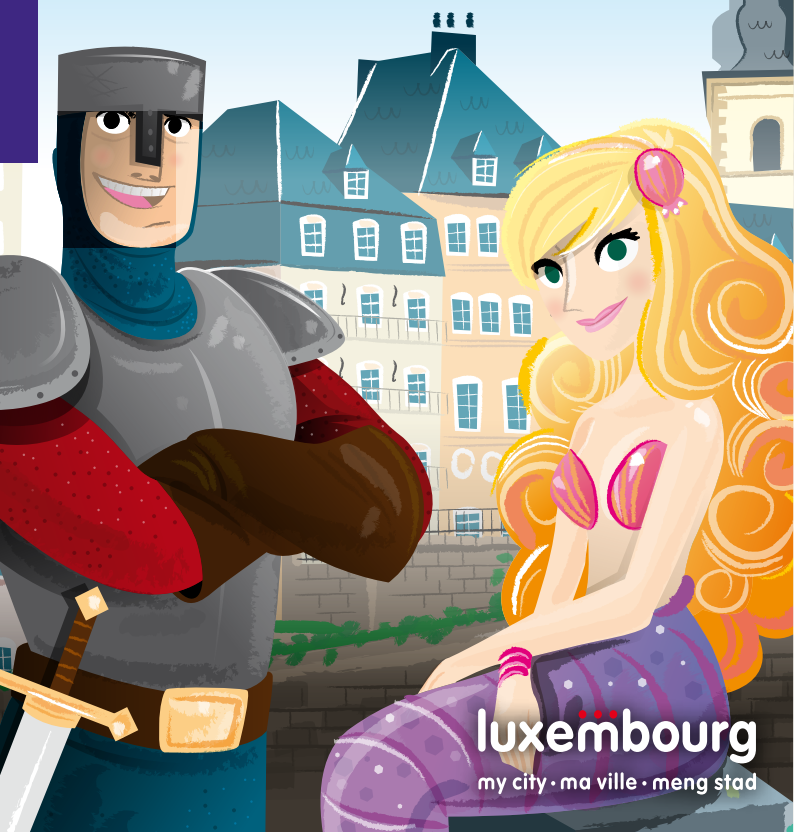


CITY PROMENADE FOR KIDS

Explore Luxembourg City with Count Siegfried and Melusina



luxembourg
my city · ma ville · meng stad

Hello dear kids,

I am Count Siegfried and together with Melusina the mermaid I would like to invite you on an exciting journey of discovery through the old fortress city of Luxembourg. We will be showing you some great sights while sharing with you a little bit of history of this city that is more than a thousand years old.

We'll leave Melusina to her usual antics down in the valley of the Alzette – she'll be joining you later in your adventure – while I show you my castle. Unfortunately today not much is left of the castle, but its remains will give you an excellent idea of the former fortress structures.

Let us introduce you to some of the sights of the city. At each one we will be asking you a question.

The red number accompanying each chosen answer must be entered as part of the final code on the last page. Provided you have answered all the questions correctly, this code will crack the safe back at the Luxembourg City Tourist Office (Place Guillaume II), where a surprise awaits you!

Count Siegfried and Melusina wish you lots of fun on your journey of discovery through Luxembourg City!

DISCOVER LUXEMBOURG CITY AND WIN A PERSONAL SOUVENIR GIFT!

The legend of Melusina

The story of the foundation of Luxembourg City by Count Siegfried in 963 is closely linked to the figure of Melusina the mermaid. When she married Count Siegfried, she stipulated one condition: every Saturday she wanted to be alone in absolute privacy.

Over the years, jealousy overcame the first count of Luxembourg and eventually led him to break his promise. He followed Melusina into the magnificent Bock casemates to secretly observe her on the forbidden day. In doing so, he saw Melusina taking a bath and discovered her secret: her bottom half was a fishtail.

When Melusina became aware of Siegfried watching her, she disappeared into the depths of the river Alzette. The count never saw his beloved Melusina again.

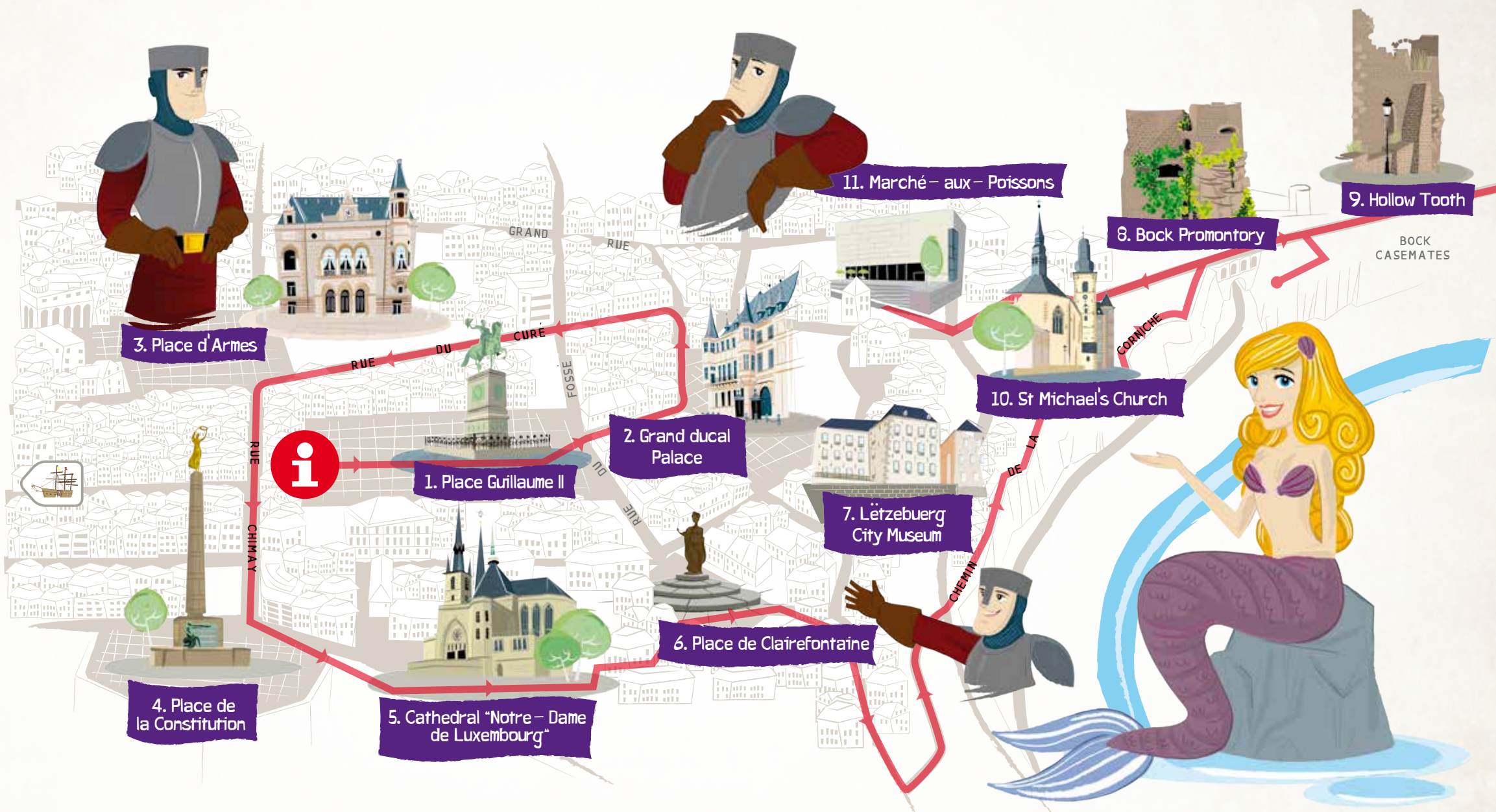
DISCOVER OUR OTHER OFFERS

Regular guided tours

- City Promenade
- Wenzel Circular Walk
- Bock Casemates
- Grand ducal Palace
- Seasonal tours

Guided tours with private guide

Would you like a personalised tour or a private guide for one or max. 25 people? We offer 30 circular walks in up to 25 different languages.



30, Place Guillaume II
L-1648 Luxembourg
T. (+352) 22 28 09
touristinfo@lcto.lu
luxembourg-city.com

luxembourg
city tourist office



Melusina's secret tip: in the municipal park, you will come across an adventure playground, where Melusina's friends love to play. A huge pirate ship awaits you. Ask the Luxembourg City Tourist Office for directions! We look forward to welcoming you and your family back to Luxembourg again soon!

Imprint
Published by: Luxembourg City Tourist Office a.s.b.l.
TVA no.: LU15621823 – R.C.S. Luxembourg F 754
Graphic art: M&V Concept
Printed by: Imprimerie Reka, FSC, 1.500 ex., 01/2020

1 Place Guillaume II

This square was named after the King of the Netherlands, William II, who was also the Grand Duke of Luxembourg. He lived more than 150 years ago. A statue of William II riding his horse dominates the square.

• What is Luxembourg's former monarch holding in his right hand?

- 1. A sword 2. A dove 3. A hat

2 Grand ducal Palace

King-Grand Duke William II is looking straight at the grand ducal Palace, the official residence of the Grand Duke of Luxembourg. This medieval building initially served as the city's town hall before it became the seat of the government. Since the late 19th century this is where the Grand Duke works and lives. During the summer months, you can explore the palace's sumptuous rooms. A raised or lowered flag up on the tower indicates whether or not the monarch is home.

• What animal is featured on the grand ducal coat of arms attached to the wrought iron balustrade of the balcony?

- 1. An eagle 2. A lion 3. A pelican

3 Place d'Armes

The Place d'Armes is known as the city's so-called "Parlour". Its many sidewalk cafés and outdoor seating areas invite passers-by to linger and relax. The middle of the square features a bandstand, which during the summer months hosts concerts almost daily. The large building dominating the square is the City Palace, which was erected in 1905. This building is linked to another by a glass footbridge.

• What is inside the City Palace?

- 1. A ceremonial hall 2. A shoe shop 3. The casemates



4 Place de la Constitution

Towering above the Place de la Constitution on top of a column is a figure known as the "Gëlle Fra" (Golden Lady). This monument was erected after the First World War in memory of Luxembourg's fallen soldiers. It was destroyed during the Second World War before being re-erected in 1985.

• What is the "Gëlle Fra" holding in her hands?

- 1. A golden sphere 2. A golden wreath 3. A golden book



5 Cathedral "Notre - Dame de Luxembourg"

The cathedral is the city's largest church. This stately old building displays the coats of arms of many cities that once used to belong to Luxembourg. Inside the cathedral, an almost 400-year-old statue of the Virgin Mary marks a place of reverence. Every year, in April - May, many Luxembourgers embark on a pilgrimage to "Our Lady of Luxembourg". During the pilgrimage period - known as the "Oktave" - the neighbouring Place Guillaume II is home to a market called "Mäertchen".

• How many towers does the cathedral have?

—



6 Place de Clairefontaine

This square is dominated by a monument to Grand Duchess Charlotte (the grandmother of the current Grand Duke), who during and after the Second World War was a beloved and committed monarch of the Luxembourg people.

• Enter the year that completes the period of reign of Grand Duchess Charlotte, as featured on the lower marble step:

1919 to — — —

Enter the last of the four numbers into the code under "6"!

7 Lëtzebuerg City Museum

Continue along the Corniche, "Europe's most beautiful balcony", and you will go past the back entrance of the Lëtzebuerg City Museum. This museum tells you the history of the city of Luxembourg, from its early beginnings to the present. On the lighter façade of the third building from the right you can see a year date starting with 17 above the second storey.

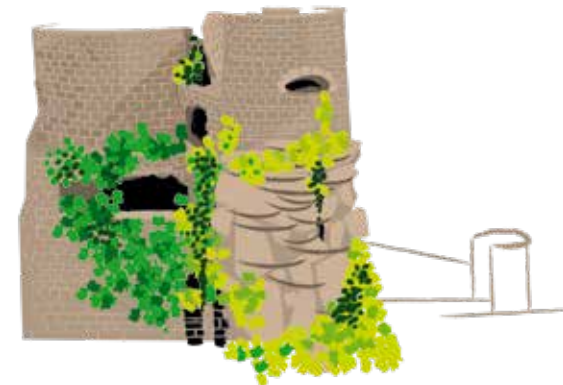
• What's the year in full?

17 — —

Continue on to the cradle of Luxembourg City, the so-called Bock Promontory. This is where Count Siegfried erected a castle in 963. He named the city's first castle "Lucilinburhuc" (small castle), from which the city's present name and that of the country are derived.

Walk along the exposed remains of the old castle and enjoy the view of the Alzette valley with your parents. Now you can understand why Siegfried and Melusina loved it here so much that they decided to erect their stronghold on this defiant rocky promontory more than a thousand years ago.

Continue up to the viewpoint and the circular plaque. The outer circle of this plaque shows the distances separating Luxembourg from other European cities.



8 Bock Promontory

The Bock Promontory consists of a series of underground galleries, which during fortress times housed thousands of soldiers and their horses.

• What are the underground fortifications called?

- 1. The catacombs 2. The casemates 3. The cannon holes

Did you know that the underground galleries were originally 23 kilometres in length and that they linked the individual bastions and fortress structures to one another? This is where Austrian soldiers lived for eight months, fighting the French Revolutionary Forces (1794-1795).

Hollow Tooth 9

On the other side of the road is - next to the Hollow Tooth - a viewing tower, which you can climb. It tells the story of a famous man, who was born in Luxembourg in 1886 and is hailed as one of the forefathers of the European Union. His first name was Robert.

• What is the surname of the European who was born in Luxembourg in 1886?

— — H — M — —



10 St Michael's Church

St Michael's Church is Luxembourg's oldest church (its first construction dates back to the 10th century). In front of the church (to the left of the entrance) stands the statue of the archangel Michael.

• What is St Michael carrying on his left arm?

— — — — —

Inside the church you will see some interesting church windows, depicting the church's turbulent history from 987 to the present day.

Search the tower of St Michael's Church for a cannon ball.



11 Marché - aux - Poissons

The Fish Market is one of the city's oldest quarters. Here you will find lots of old houses, which give you a picture of what the city looked like once upon a time. This is the home of the National Museum of History and Art, where you can admire, among other things, one of the best-preserved mosaic floors from Roman times.

• Complete the official name (see the stone carving in front of the museum) of the museum (in French)

MUSÉE NATIONAL D'HISTOIRE ET D' — — —

Elsewhere on the Fish Market, you will spot a sentence in "Lëtzebuergesch" that says "Mir wöлле bleiwe wat mir sin". Try and find out what this sentence means!

Now head past the grand ducal Palace and, via Place Guillaume II, back to the Luxembourg City Tourist Office. Once there, type the code below into the safe keypad to retrieve your very own Luxembourg gift, provided you have entered the right combination of course (the solutions to questions 1, 2, 3, 4, 6 and 8).

So what is the code for the safe?

— — — — —
1 2 3 4 6 8

Congratulations and enjoy Luxembourg!